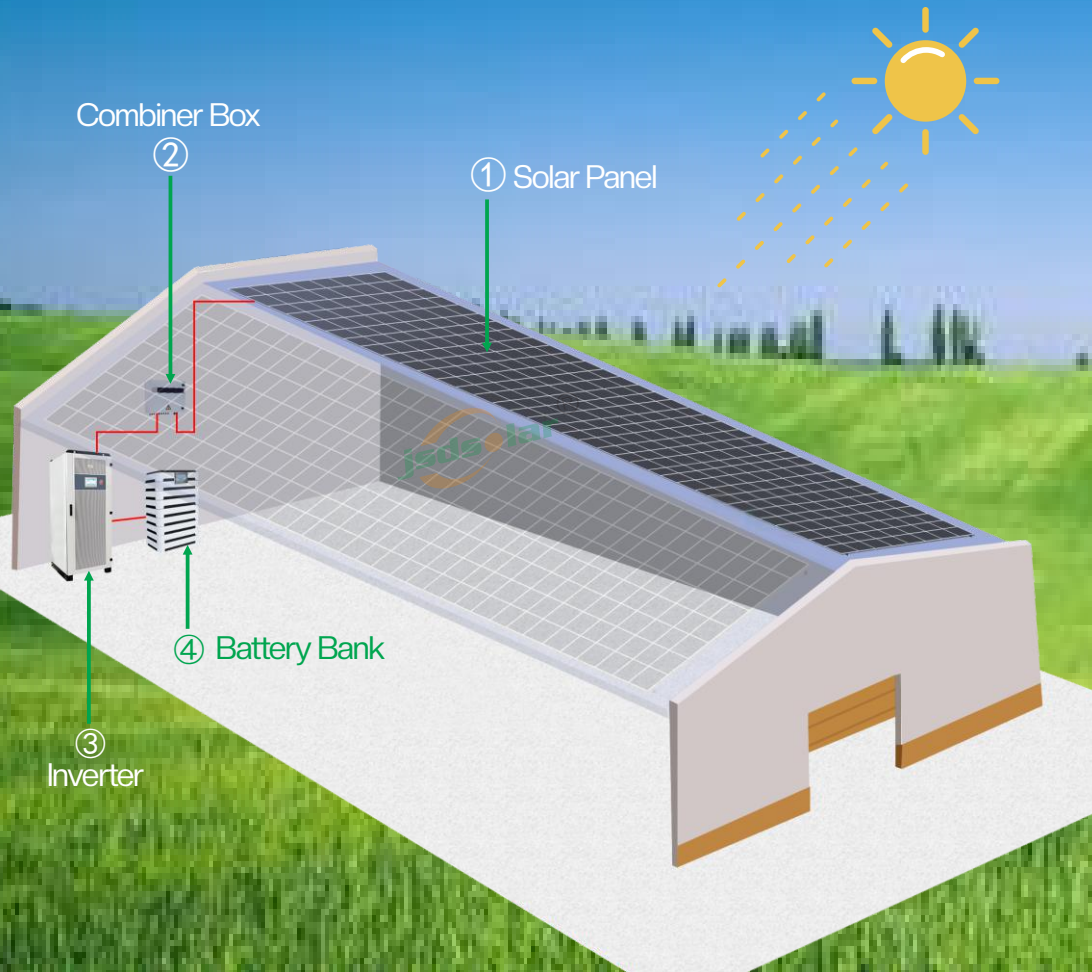


30-150KW Solar Power System

Use high-quality LiFePO4 battery
life up to 6000 times



JSDSOLAR

--- 15 Years Experience In Lithium Solar System
Your Best Choice

Product



[1] Test conditions: 100%DOD,0.2C,charge&discharge at+25°C
 [2]-10°C to 10°C will be derating



Technical Parameters

Model	JHB60-400	JHB90-600
Battery Type	LiFePO4	
Energy	61.44KWH	92.16KWH
Capacity	150AH	
Rated Voltage	409V	614V
Working Voltage Range	320 ~ 467V	480 ~ 700V
Max Charge Current	150A	200A
Max Discharge Current	150A	200A
Standard Charge Current	75A	100A
Standard Discharge Current	75A	100A
DOD	100%	
Max Parallel Quantity	1	
Designed Life-span [1]	6000 cycles	
Operating Temperature [2]	Charge : 0~60°C Discharge : -10~60°C	
Operation Humidity	5~95%	
Nominal Operation Altitude	<3000m	
IP Rating	IP22	
Installation Method	Stacking	
Communication	Rs485	
Certification	CE	
Net Weight	≈600kg	≈900kg
Dimension(L*W*H)	770*450*1210 mm	770*450*1747 mm

PV+ESS integrated machine



Villages without electricity



Off-grid island



Nomadic farm



Off-grid mine

Product features:



Friendly flexible

- Various working modes can be set flexibly;
- PV controller modular design, easy to expand;



Safe and reliable

- Built-in isolation transformer for high load adaptability;
- Perfect protection function for inverter and battery;
- Redundancy design for important functions;



Abundant configuration

- Integrated design, easy to integrate;
- Support simultaneous access of load, battery, power grid, diesel and PV;
- Built-in maintenance bypass switch, improve system availability;



Intelligent and efficient

- Support battery capacity and discharge time prediction;
- Smooth switching between on and off grid, uninterrupted supply of load;
- Operate with EMS to monitor system status in real time



MPS PV and battery configuration principles:

- Boost mode configuration principle - open voltage at low temperature at the limit of PV installation * number of PV panels in series \leq the lowest voltage of the battery;
- Buck mode configuration principle - the maximum power operating voltage at the extreme high temperature of PV installation \geq the highest voltage of the battery;
- The PV and battery configurations of MPS must comply with the above configuration principles;

Technical Parameters

Technical specification	MPS0030	MPS0050	MPS0100	MPS0150
AC(on-grid)				
Max output power(KVA)	33	55	110	165
Rated power(KW)	30	50	100	150
Rated voltage(V)	400			
Rated current (A)	43	72	144	216
Voltage range(V)	320-460			
Rated frequency (Hz)	50/60			
Frequency range(Hz)	45-55/55-65			
THDi	<3%			
Power factor	1lagging-1leading			
AC connection	3W+N+PE			
Transformer ratio	100/400	200/400	270/400	270/400
AC(Off Grid)				
Max output power(KVA)	33	55	110	165
Rated power(KW)	30	50	100	150
Rated voltage(V)	400			
Rated current(A)	43	72	144	216
THDu	\leq 1% linear ; or \leq 5% nonlinear			
Rated frequency(Hz)	50/60			
Overload capacity	110% long-term			
Photovoltaic input				
Max. PV input voltage(V)	1,000			
Max. PV power(KW)	60/120	60/120	120/180/240	120/180/240
MPPT voltage range(V)	250-850			
MPPT voltage range @full load (V)	450-850			
Battery				
Battery voltage range(V)	250~850	320~850	420~850	420~850
Max. charging power(KW)	60/120	60/120	120/180/240	120/180/240
General data				
Dimension W*D*H(mm)	800*800*1,900	800*800*1,900	1,200*800*2,050	1,200*800*2,050
Weight(kg)	620/650	720/750	1,120/1,150/1,180	1,250/1,280/1,310
Operation temperature	-30℃~55℃			
Relative humidity	0-95% non-condensing			
Ingress protection	IP20			
Noise emission(DB)	< 70dB			
Altitude	5,000m(> 3,000 Derating)			
Cooling	Air Cooling			
Display and communication				
Display	LCD Touch-screen			
BMS communication	RS485,CAN			
EMS communication	RS485,TCP/IP			
Certificates	TUV,CE			

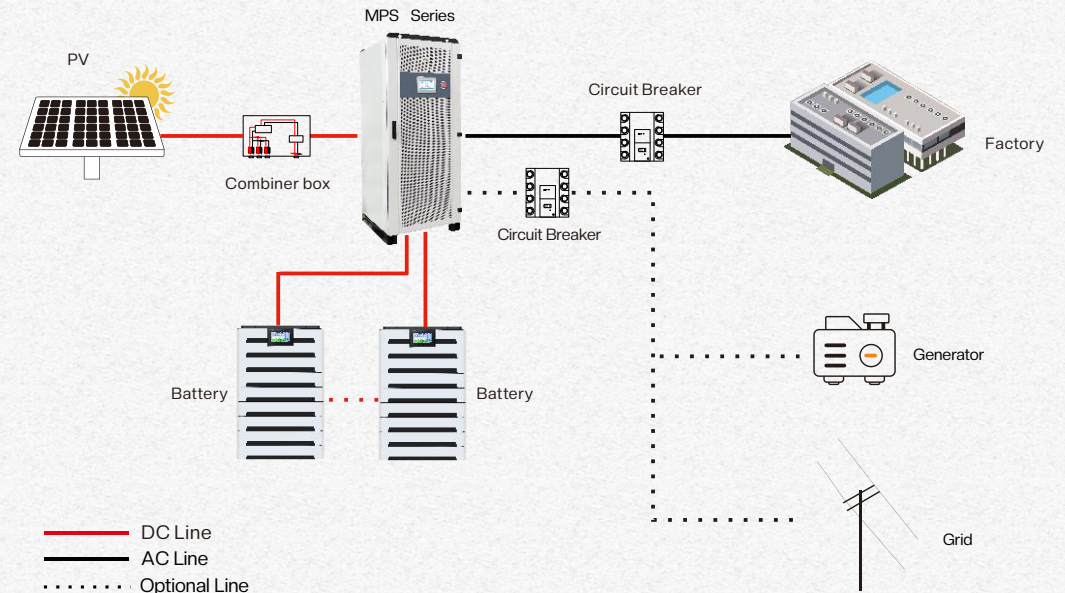
◆ Product Features :



- 1: Integrated design to support loads, battery, AC and PV to be connected
- 2: Seamless transfer between on-grid and off-grid
- 3: LCD touch screen control
- 4: 30-150KW/385V output, suitable for industrial and commercial power
- 5: Large battery capacity with compact design
- 6: Use high-quality LiFePO4 battery, life up to 6000 times

Configuration Model	Battery Capacity	Integrated hybrid inverter	Solar panel power
JHB30-30KW	60KWH/90KWH/120KWH	MPS0030	7KW~30KW
JHB50-50KW	90KWH/120KWH/180KWH	MPS0050	7KW~50KW
JHB100-100KW	180KWH/270KWH	MPS0100	10KW~100KW
JHB150-150KW	270KWH/360KWH	MPS0150	10KW~150KW

Product Topology





OEM&ODM Acceptable,

Look Forward To Cooperating With You!

ADD: NO.68, BaiGongAo Industrial Zone, Xikeng Community, Guanlan Town,
Longhua District, Shenzhen City, 518110, China

TEL: +86 755 89918655 | FAX: +86 755 89918655



WEB: www.jsdsolar.com